

LogiLink®

Premium Energy Cost Meter

Art. No.: EM0003



Spot inefficient electrical equipment in your household with the LogiLink Energy Cost Meter. The display shows the energy and load power needed. With inserting your personal power tariff it automatically calculates the cost tariff. With build-in child protection.

Features:

- » Display current power
- » Display and save accumulative total power quantity
- » Display and save total power charge of price
- » Operating area: Indoor
- » Rating power: up to 3680W
- » Outlet child protection
- » Dual programmable power tariffs (cent/kwh)



Specification:

Power Supply	230V~50Hz
Max. Load	16A
Voltage Working Range	200VAC - 276VAC
Timing Display Range	0 second ~ 9999 days
Power Display Range	0.001 ~ 9999W
Voltage Display Range	0.000 ~ 9999V
Current Display Range	0.000 ~ 9999A
Frequency Display Range	0.000 ~ 9999Hz
Rate of Electricity Range	0.000 ~ 99.99COST/KWH
Total Cost Consumption Range	\$0.000 ~ 9999K
Total Energy Consumption Range	0.000 ~ 9999KWH
Voltage Frequency	45~65Hz
Working Temperature	5°C~40°C



RoHS
compliant



* The specifications and pictures are subject to change without notice.
*All trade names referenced are the registered trademark of their respective owners.



EM0003



Made in China

LogiLink®

Premium Energy Cost Meter

Art. No.: EM0003

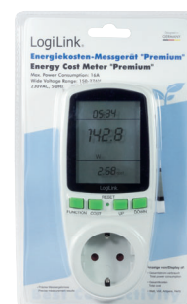


Package Contents:

- » 1 x Energy Cost Meter
- » 1 x User Manual

Package Informations:

- » Packing Dimension: 230 x 140 x 85mm
- » Packing Weight: 0.27kg
- » Carton Dimension: 360 x 320 x 500mm
- » Carton Q'ty: 24pcs
- » Carton Weight: 7.5kg



RoHS
compliant



* The specifications and pictures are subject to change without notice.
* All trade names referenced are the registered trademark of their respective owners.



EM0003



Made in China